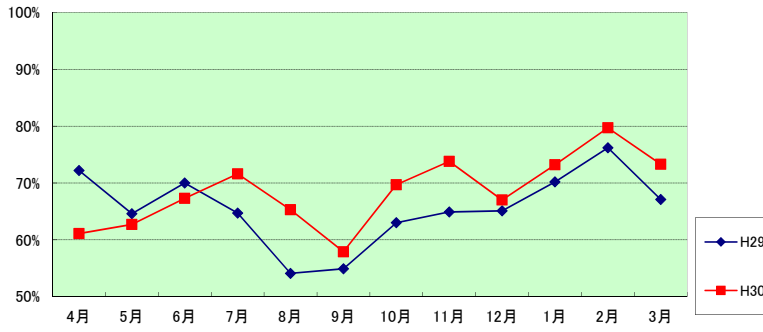


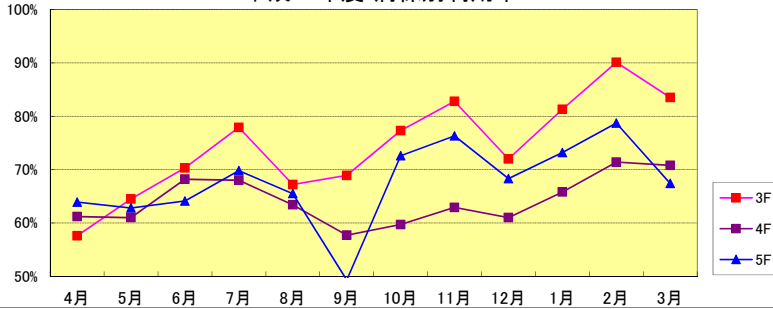
利用率(前年度比)



月別利用率

	H22	H29	H30	前年比	H22比	稼働率
4月	86.6%	72.2%	61.1%	84.6%	70.6%	64.6%
5月	81.7%	64.6%	67.3%	97.1%	76.7%	66.5%
6月	89.0%	70.0%	67.3%	96.1%	75.6%	71.2%
7月	82.1%	64.7%	71.6%	110.7%	87.2%	75.3%
8月	88.8%	54.1%	65.3%	120.7%	73.5%	69.6%
9月	84.8%	54.9%	57.9%	105.5%	68.3%	61.0%
10月	87.7%	63.0%	69.7%	110.6%	79.5%	73.1%
11月	84.7%	64.9%	73.8%	113.7%	87.1%	78.3%
12月	82.2%	65.1%	67.0%	102.9%	81.5%	70.9%
1月	82.0%	70.2%	73.2%	104.3%	89.3%	76.7%
2月	88.9%	76.2%	79.7%	104.6%	89.7%	84.2%
3月	82.8%	67.1%	73.3%	109.2%	88.5%	77.0%
AV	85.1%	65.6%	68.6%	104.5%	80.6%	72.4%

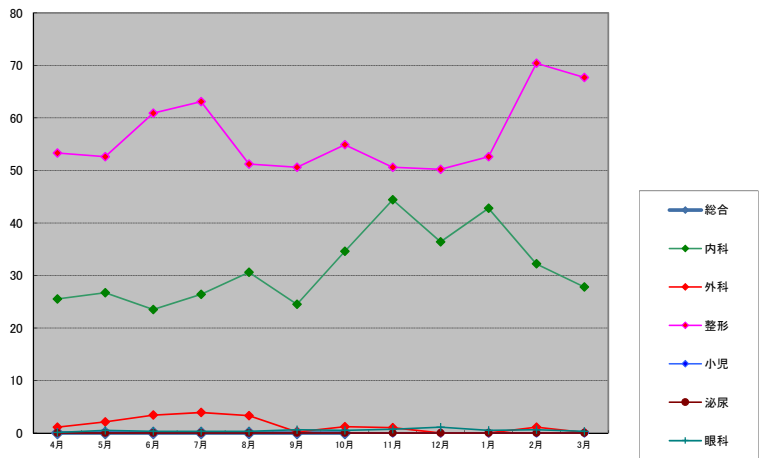
平成30年度 病棟別利用率



病棟別利用率

	3F	前年比	稼働率	4F	前年比	稼働率	5F	前年比	稼働率
4月	57.6%	75.5%	61.2%	61.2%	90.1%	64.8%	63.9%	87.9%	67.1%
5月	64.5%	93.8%	68.7%	61.0%	85.4%	64.3%	62.8%	113.8%	66.7%
6月	70.3%	104.1%	75.3%	68.2%	93.2%	71.5%	64.1%	92.5%	67.7%
7月	77.9%	122.1%	81.7%	68.0%	93.7%	71.0%	69.8%	119.3%	74.1%
8月	67.2%	121.1%	71.7%	63.4%	127.6%	67.4%	65.5%	114.9%	69.9%
9月	68.9%	97.7%	72.3%	57.7%	107.4%	60.2%	49.3%	113.1%	52.9%
10月	77.3%	95.7%	81.2%	59.7%	94.9%	62.6%	72.6%	148.5%	75.9%
11月	82.8%	100.6%	87.9%	62.9%	88.1%	67.2%	76.3%	168.1%	80.4%
12月	72.0%	94.2%	76.9%	61.0%	104.5%	63.9%	68.3%	110.2%	72.3%
1月	81.3%	99.8%	85.0%	65.8%	104.6%	68.7%	73.2%	108.3%	77.0%
2月	90.1%	106.3%	95.0%	71.4%	100.4%	75.1%	78.7%	106.6%	83.6%
3月	83.5%	118.8%	87.9%	70.8%	111.8%	73.9%	67.4%	99.4%	71.1%
AV	74.5%	87.7%	78.7%	64.3%	81.7%	67.6%	67.7%	88.1%	71.6%

平成30年度 1日平均入院患者数



科別1日平均入院患者数

	総合	内科	外科	整形	小児	泌尿	眼科	計(人)
4月	0	25.5	1.1	53.3	0.0	0.0	0.1	80.0
5月	0	26.7	2.1	52.6	0.1	0.0	0.5	82.0
6月	0	23.5	3.4	60.9	0.0	0.0	0.3	88.1
7月	0	26.4	3.9	63.1	0.0	0.0	0.3	93.7
8月	0	30.6	3.3	51.2	0.0	0.0	0.3	85.4
9月	0	24.5	0.2	50.6	0.0	0.0	0.6	75.9
10月	0	34.6	1.2	54.9	0.0	0.0	0.5	91.2
11月		44.4	1.0	50.6	0.0	0.0	0.7	96.7
12月		36.4	0.0	50.2	0.0	0.0	1.1	87.7
1月		42.8	0.0	52.6	0.0	0.0	0.5	95.9
2月		32.2	1.1	70.4	0.0	0.0	0.6	104.3
3月		27.8	0.1	67.7	0.0	0.0	0.3	95.9
AV	0.0	31.3	1.5	56.5	0.0	0.0	0.5	89.7